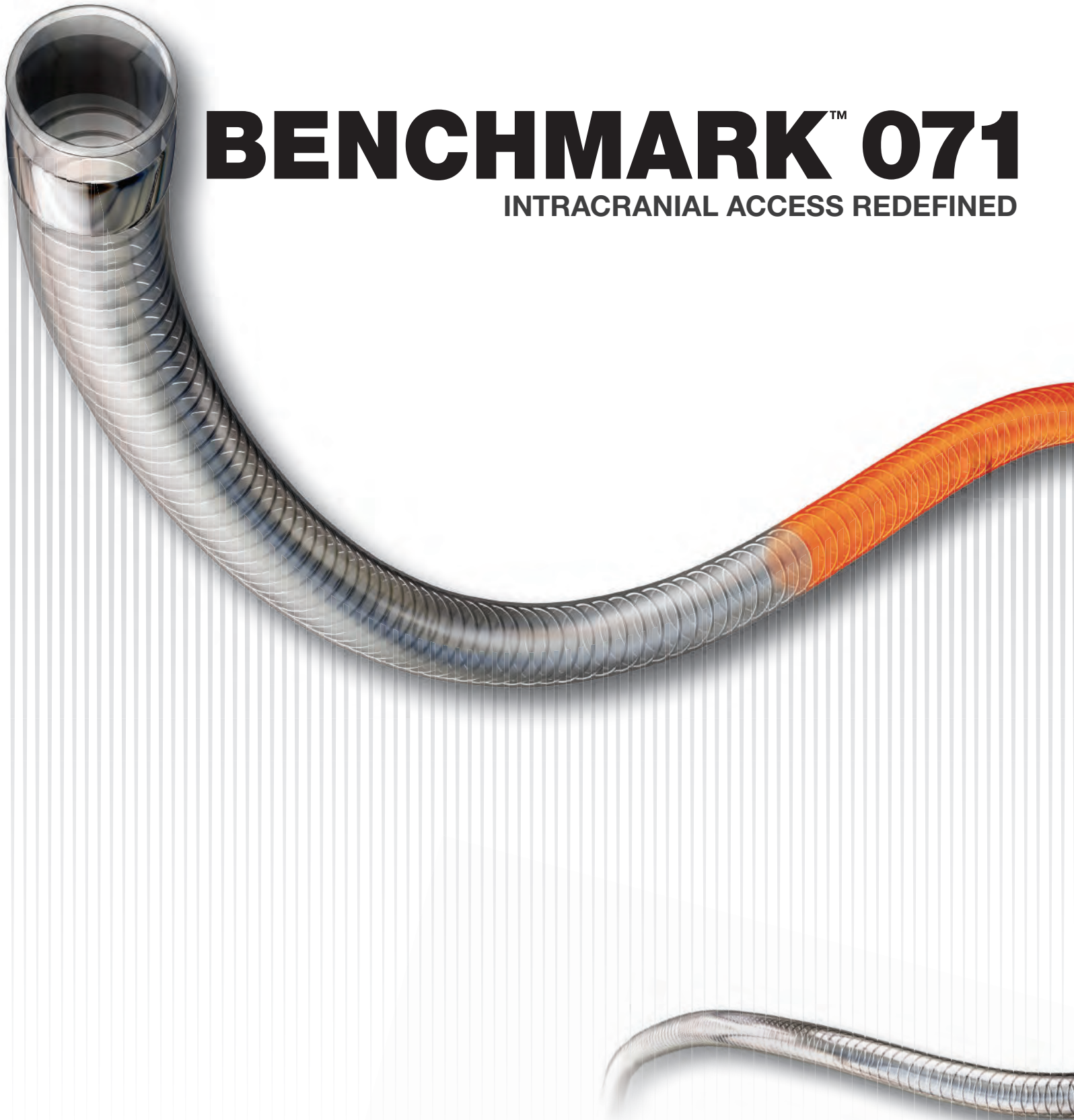


BENCHMARK™ 071

INTRACRANIAL ACCESS REDEFINED

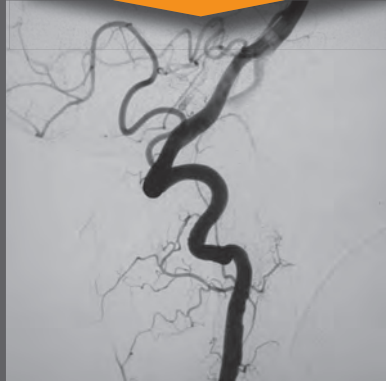


BENCHMARK™ Case Examples

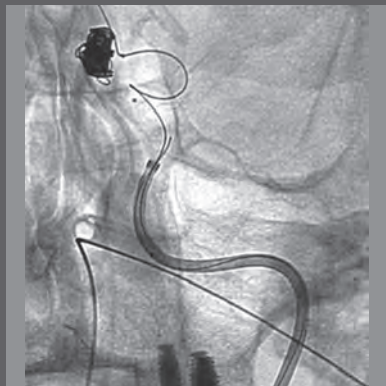
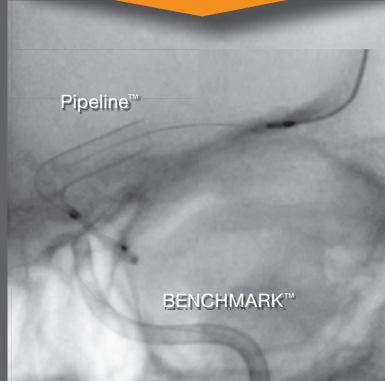
Stability & Compatibility



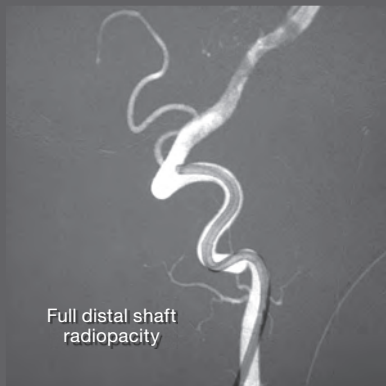
Atraumatic Navigation



Flow Diverter Delivery



Balloon Coiling of Ruptured ACOM Aneurysm



Full distal shaft radiopacity

Distal Purchase for Basilar Tip Aneurysm Coiling

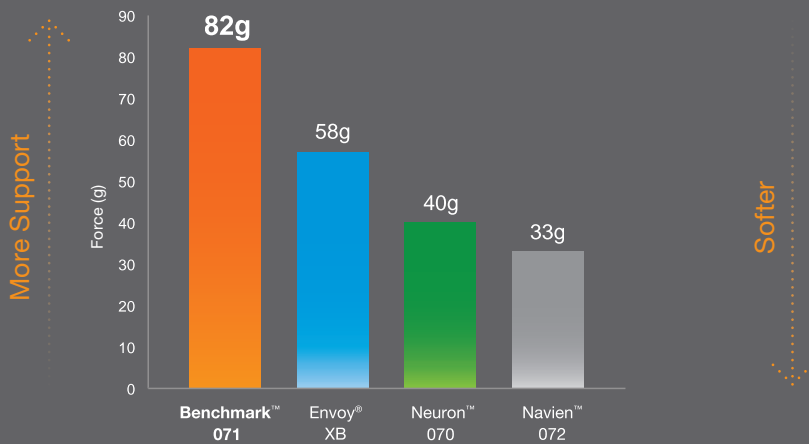
Stability Without Long Sheath



Compatible With Neuron™ MAX for Added Support

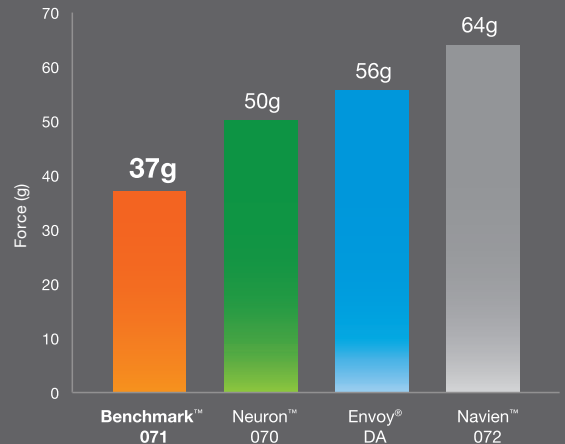
Performance Testing

Designed to Maximize Arch Support



Buckling Test: Higher values correspond with more proximal support¹

A New Level of Tip Softness



Deflection Test: Lower values correspond to softer distal tip²

1. Data on file at Penumbra, Inc.
2. Data on file at Penumbra, Inc.

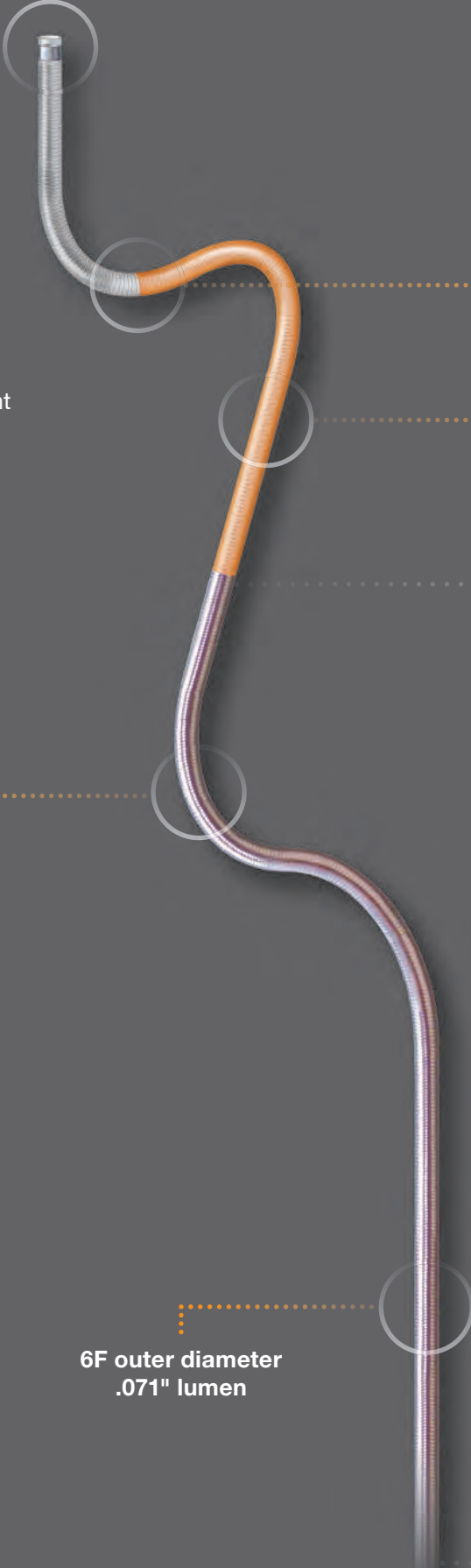
BENCHMARK™ 071: Built with ACE™ technology



Polished, Atraumatic Tip:
Optimized for safe placement into distal anatomy



Hybrid Flat/Round Metal Reinforcement:
Enables both arch support and tortuous navigation



Advanced Polymer:
Enables easy navigation and excellent visibility

10 Material Transitions:
Efficient energy transfer for optimal trackability

Proximal Shaft Construction:
Provides extra stability even when left lower than expected

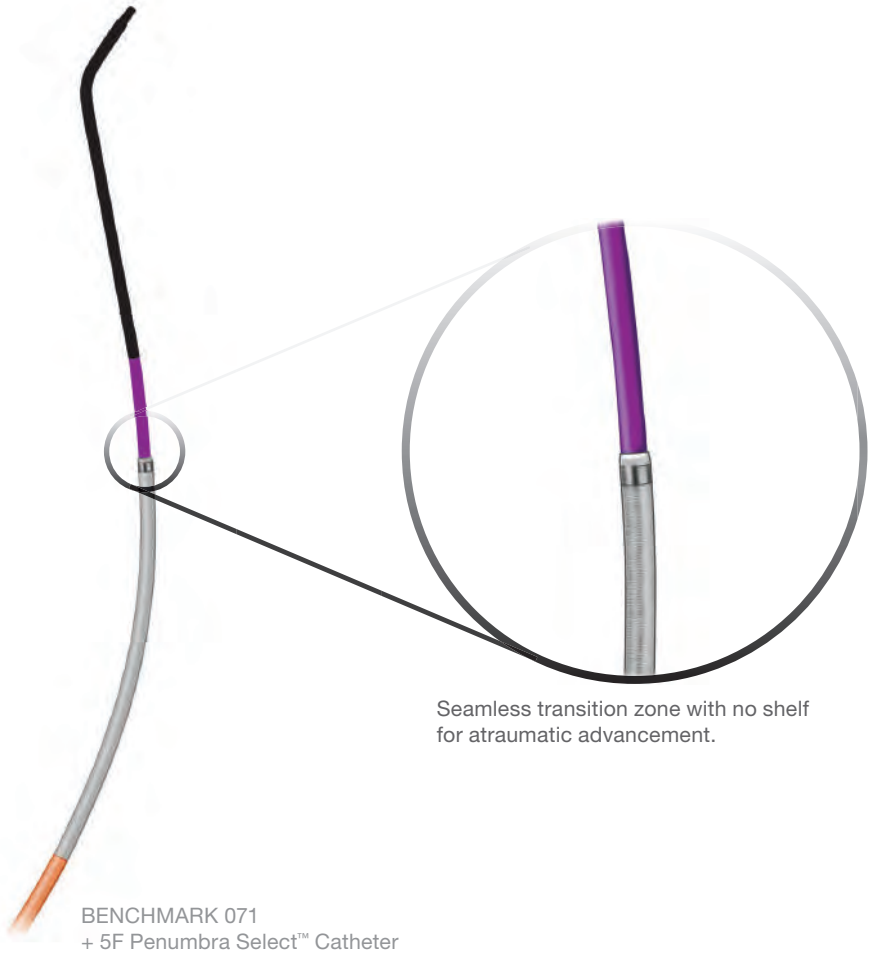
6F outer diameter
.071" lumen

BENCHMARK™ 071 is Now Packaged with a 5F Penumbra Select™ Catheter

Advantages of Select™ Technology

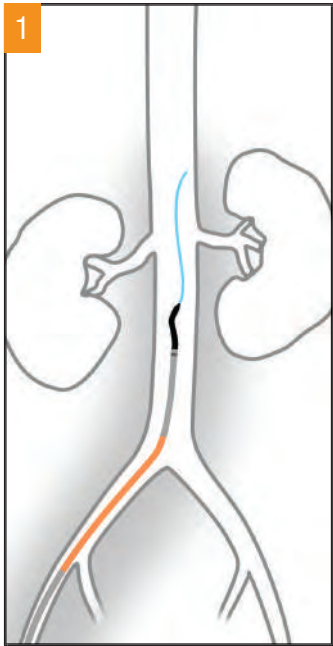
- Faster procedures – no need for an exchange
- Allows easy selection off of arch into desired vessel, and immediate final placement
- Facilitates atraumatic placement into distal vasculature
- Can be used for diagnostic angiogram – .040" lumen
- Compatible with all .035"–.038" guidewires

Preload BENCHMARK™ 071 guide catheter with 5F Penumbra Select™ catheter of desired shape.

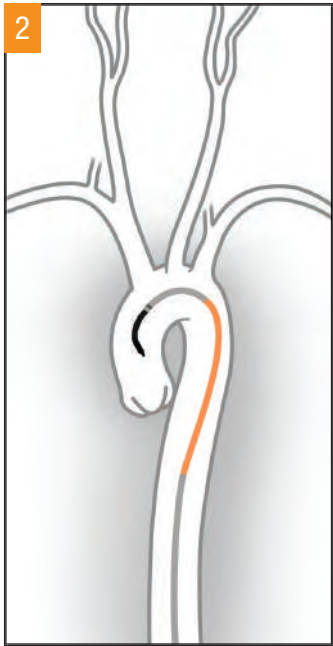


Seamless transition zone with no shelf for atraumatic advancement.

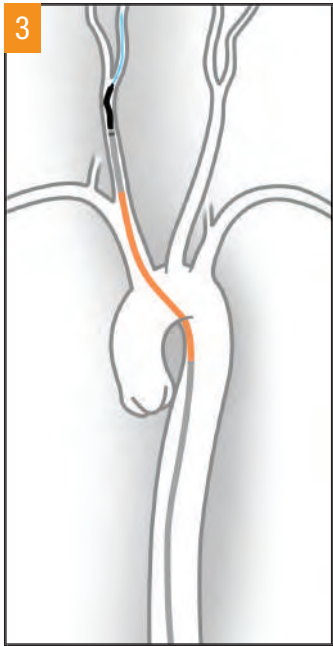
Primary Access – Delivery Technique



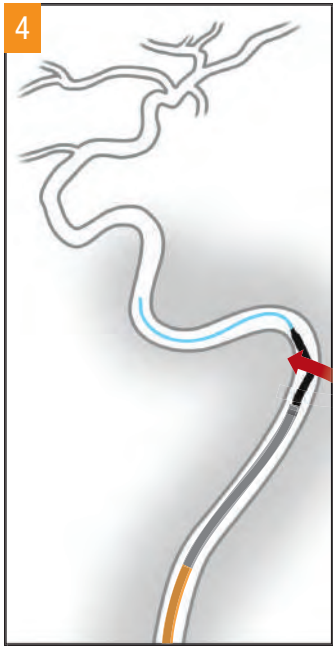
1 Introduce the preloaded system over a guidewire and advance to a straight section of the abdominal aorta.



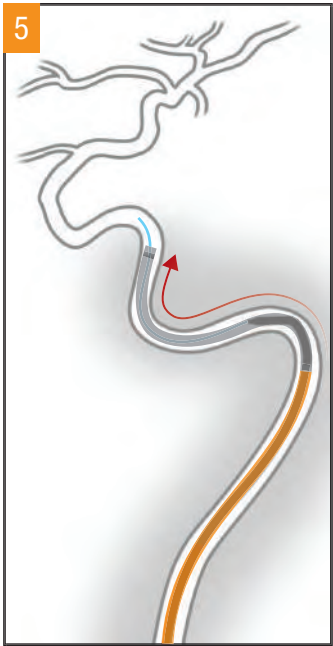
2 Advance the tip of Select™ over the guidewire into the ascending aorta while maintaining the position of BENCHMARK™ 071.



3 Advance Select™ and Benchmark™ 071 over the guidewire into the internal carotid artery.



4 With sufficient wire purchase, torque Select™ catheter towards the first major turn.



5 While maintaining position of Select™ and guidewire, advance BENCHMARK™ 071 into desired position.



6 Remove Select™ while holding BENCHMARK™ 071 in position.

BENCHMARK™ 071

BENCHMARK™ 071				5F Select™	
Catalog Number	Description	Length	Shape	Length	Shape
BMK6F95BER120	BENCHMARK™ 071 KIT	95 cm	Straight	120 cm	BER
BMK6F95MBER120	BENCHMARK 071 KIT	95 cm	MP	120 cm	BER
BMK6F105BER130	BENCHMARK 071 KIT	105 cm	Straight	130 cm	BER
BMK6F105MBER130	BENCHMARK 071 KIT	105 cm	MP	130 cm	BER
BMK6F95	BENCHMARK 071	95 cm	Straight	–	–
BMK6F95M	BENCHMARK 071	95 cm	MP	–	–
BMK6F105	BENCHMARK 071	105 cm	Straight	–	–
BMK6F105M	BENCHMARK 071	105 cm	MP	–	–

5F Select™ Catheters

Catalog Number	Description	Working Length	Inner Diameter	Wire Compatibility	Shape
PNS5F120BER	5F Select™ Catheter	120 cm	.040"	.035 / .038"	BER
PNS5F130BER	5F Select Catheter	130 cm	.040"	.035 / .038"	BER
PNS5F130SIM	5F Select Catheter	130 cm	.040"	.035 / .038"	SIM
PNS5F120H1	5F Select Catheter	120 cm	.040"	.035 / .038"	H1
PNS5F130H1	5F Select Catheter	130 cm	.040"	.035 / .038"	H1

Neuron™ MAX 6F 088 Lumen Long Sheath

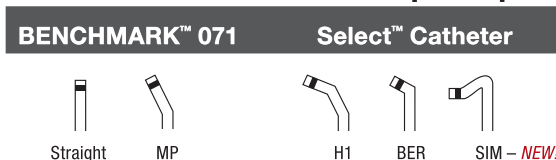
Catalog Number	Description	Working Length	Distal Flexible Zone	Inner Diameter	Wire Compatibility	Shape
PNML6F088804	6F 088 Neuron™ MAX Long Sheath	80 cm	4 cm	.088"	.035 / .038"	Straight
PNML6F088804M	6F 088 Neuron MAX Long Sheath	80 cm	4 cm	.088"	.035 / .038"	MP
PNML6F088904	6F 088 Neuron MAX Long Sheath	90 cm	4 cm	.088"	.035 / .038"	Straight
PNML6F088904M	6F 088 Neuron MAX Long Sheath	90 cm	4 cm	.088"	.035 / .038"	MP

Distal Delivery Catheter (DDC)* – Hyper Distal Access Solution Intended for Ophthalmic and Beyond

Catalog Number	Description	Working Length	Proximal OD	Distal OD	Effective Flow Lumen	Total Length
5MAXDDC115	5MAX™ Distal Delivery Catheter	115 cm	6.0F (.080")	5F	.062"	119 cm
5MAXDDC125	5MAX Distal Delivery Catheter	125 cm	6.0F (.080")	5F	.062"	129 cm
4MAXDDC130	4MAX™ Distal Delivery Catheter	130 cm	6.0F (.080")	4.3F	.053"	134 cm

* Recommended for use with Neuron™ MAX 088

Tip Shapes



www.penumbrainc.com

Penumbra, Inc. USA
 One Penumbra Place
 Alameda, CA 94502
 USA
 1.888.272.4606
 T 1.510.748.3200
 F 1.510.748.3232
 order@penumbrainc.com
 info@penumbrainc.com

Penumbra Europe GmbH
 Am Borsigturm 44
 13507 Berlin
 Germany
 T +49 30 2005 676-0
 F +49 30 2005 676-10
 order@penumbrainc.de
 info@penumbrainc.de

Penumbra Neuro Australia Pty Ltd
 Suite 3, Level 5, 1 Oxford Street
 Darlinghurst NSW 2010
 Australia
 T +61-1300 817 025
 F +61-1300 817 026
 order.anz@penumbrainc.com